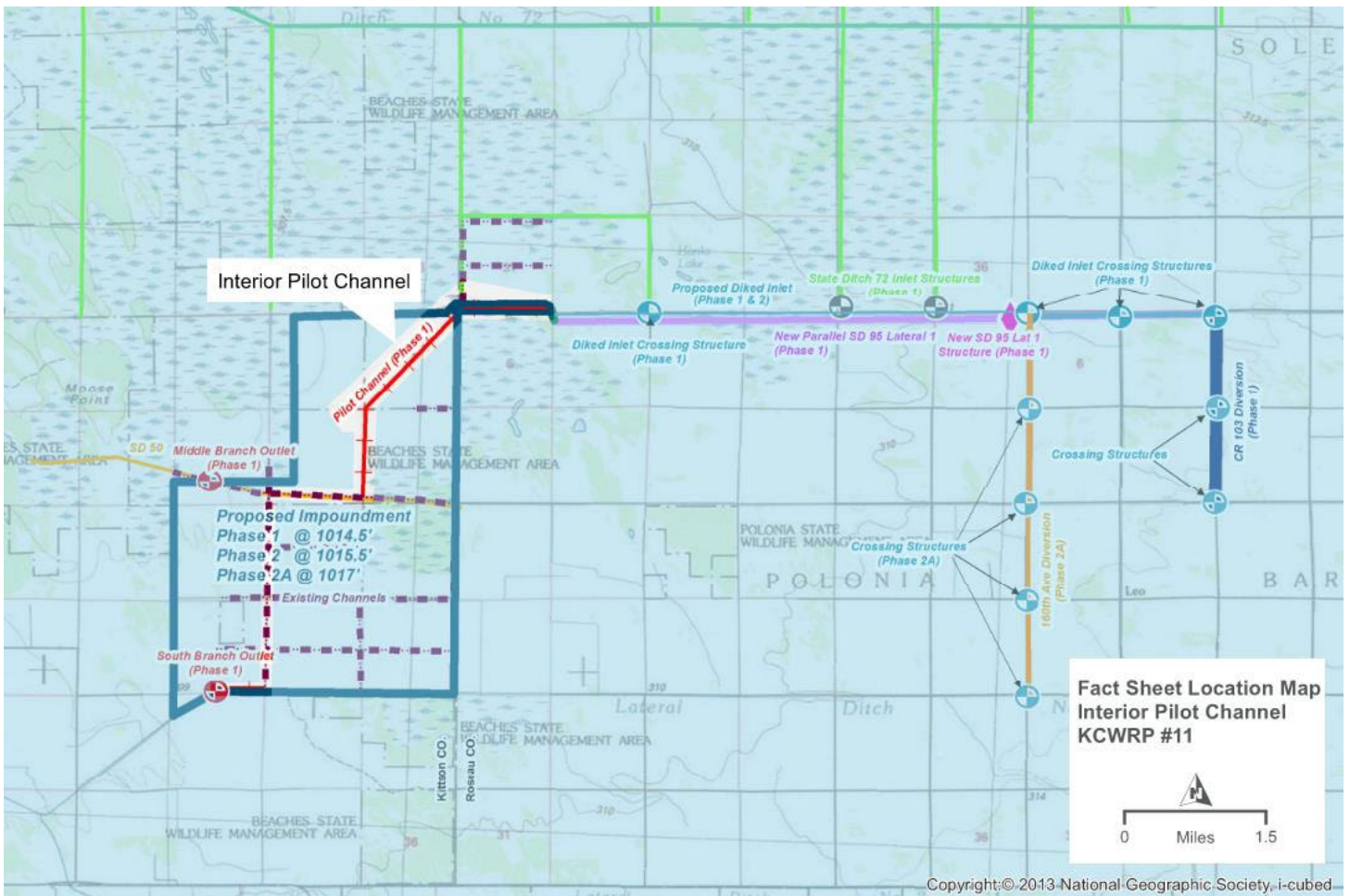


Two Rivers Watershed District Klondike Clean Water Retention Project #11 - Fact Sheet - 10/1/22



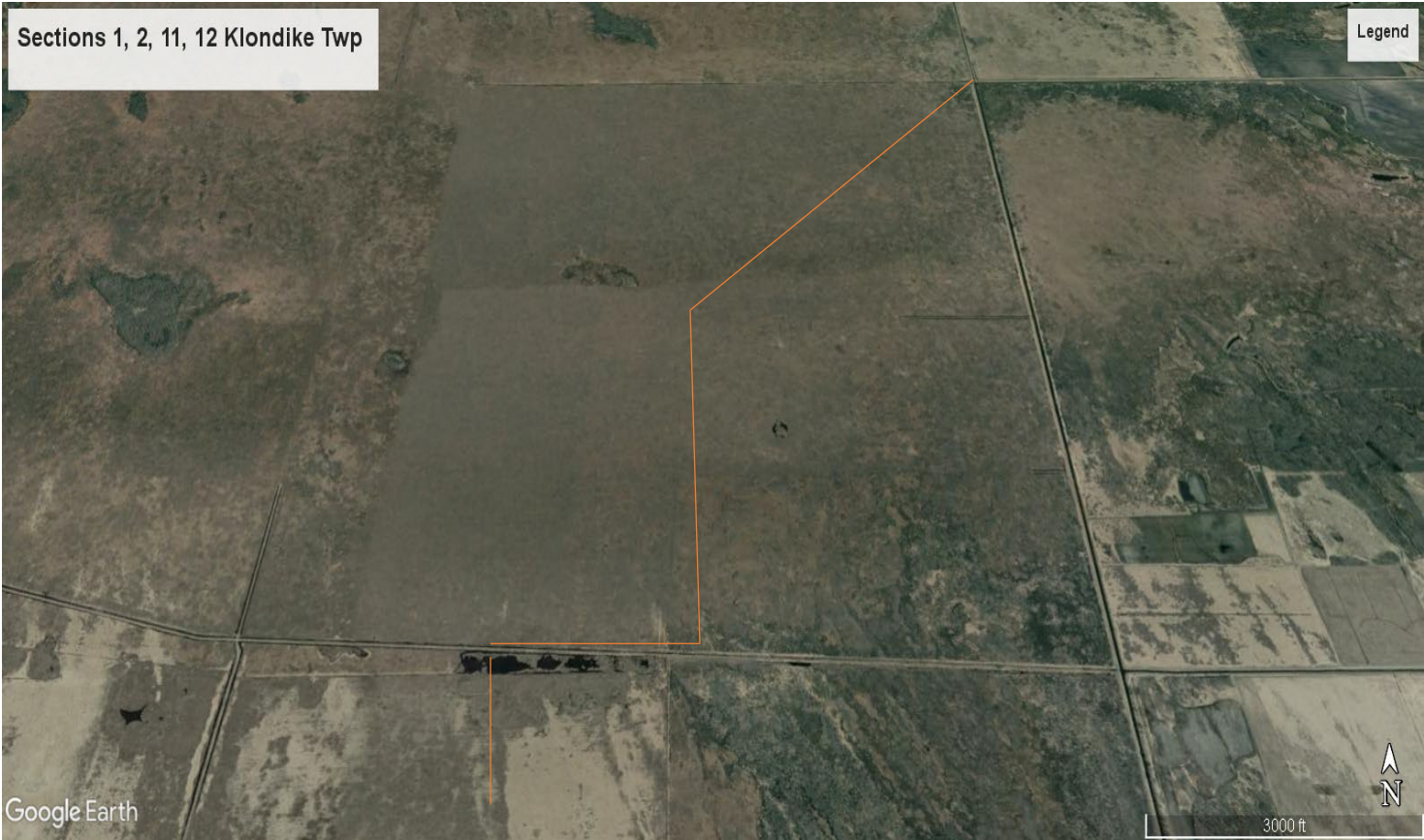
Interior Pilot Channel

To operate the Project, including filling and drawdown, a pilot channel is required that connects the two outlet structures with the retention areas and the Diked Inlet. Much of the retention area was previously farmed and has drainage to either SD 50 or SD 95 Lat 1. The new pilot channel will utilize portions of these existing ditches. A newly excavated channel will connect with the existing SD 95 Lat 1 and convey inflows to the retention area to the north of 280th St at one mile east of the Roseau-Kittson County line (Section 31, June Berry Township). This new channel will cross over the county line on the interior of the retention site and continue to the southwest towards SD 50.



Sections 1, 2, 11, 12 Klondike Twp

Legend



KCWRP #11
PILOT CHANNEL
N-T-S

420+00

